

“Dream Big, Fly High”



WOODFORD
PRIMARY SCHOOL

Welcome to our Reception Induction Meeting



WOODFORD
PRIMARY SCHOOL

The Leadership Team



Mrs Woolley
Executive Headteacher



Mrs Drake
Head of School



WOODFORD
PRIMARY SCHOOL

The Laurus Trust Vision

“For everyone, regardless of background or circumstance, to be inspired, to thrive in all environments, to recognise what it takes to succeed, to set aspirational goals and to work hard to achieve them.”



LAURUS
TRUST



WOODFORD
PRIMARY SCHOOL



**GORSEY
BANK**
PRIMARY SCHOOL



WOODFORD
PRIMARY SCHOOL



**CHEADLE
HULME**
PRIMARY SCHOOL



**HAZEL
GROVE**
HIGH SCHOOL



LAURUS
TRUST

**LAURUS
CHEADLE
HULME**



**LAURUS
RYECROFT**

**CHEADLE
HULME** HIGH SCHOOL



DIDSBURY
HIGH SCHOOL



WOODFORD
PRIMARY SCHOOL

The Reception Team



Mrs Stevenson

Reception Class Teacher

Learning Support Assistants (LSAs)



WOODFORD
PRIMARY SCHOOL

Safe and Happy Children

The most important thing to us is that children arrive at school happy and remain happy throughout the day.

A safe and happy environment is conducive to successful learning.





WOODFORD
PRIMARY SCHOOL

Learning and Development



- An Enabling Environment
- Children's interests are central to planning and provision
- A mixture of adult directed teaching in whole class and small groups and child-initiated learning
- Opportunities for playing and exploring
- Observational assessment to inform next steps (Assessment for Learning)



WOODFORD
PRIMARY SCHOOL

There's much more to it than that of course...

- Making friends
- Learning outside the classroom
- Enrichment Curriculum
- Assemblies
- Playtimes

Be prepared for anything!





WOODFORD
PRIMARY SCHOOL

Curriculum Drivers

COLLABORATION

To learn from each other
To support each other
To be successful together

POSSIBILITIES

To challenge ourselves
To challenge each other
To push boundaries

RESPECT

To understand ourselves
To appreciate each other
To value diversity

TECHNOLOGY

To learn
To communicate
To create



WOODFORD
PRIMARY SCHOOL

School Rules

We are respectful





We do our best

We make good choices



House System

House points are awarded for achievements in accordance with our 3 School Rules, both in relation to pupils' work and how they show respect towards others.

 Altius	Altius is Latin for the Olympic quality 'higher'
 Citius	Citius is Latin for the Olympic quality 'faster' or 'swifter'
 Fortius	Fortius is Latin for the Olympic quality 'stronger'
 Magnus	Magnus is Latin for the qualities of 'great', 'mighty' or 'powerful'



WOODFORD
PRIMARY SCHOOL

Our School Day



08.45 School Opens - Morning Registration

Learning in classroom and outdoors including a snack time

12.00 Lunch

1.00 Afternoon Registration

Learning in classroom and outdoors

15.15 Home Time





Attendance & Punctuality

Establishing good habits of attendance and punctuality helps to ensure your child makes the best start at school.

Every Minute Counts

If you arrive late to school everyday your learning begins to suffer. This graph shows how being late to school everyday over a school year adds up to lost learning time.



(Over one academic year)



WOODFORD
PRIMARY SCHOOL

Kids Club

Monday – Friday: 7.30 – 8.45am

Monday – Friday: 3.15 – 5.30pm

- Creating a Lego masterpiece
- Channelling creative skills
- Running off some energy outside
- Chilling out with a book





WOODFORD
PRIMARY SCHOOL

Lunchtime

- Your child will be entitled to a universal free school meal so there will be no charge.
- You need to order your child's lunch via the School Grid App, where you can choose from a choice of meals.
- You may wish to provide a healthy packed lunch. We are allergy aware and do not allow nuts of any form in school.





WOODFORD
PRIMARY SCHOOL

Snack Time

- We take part in the School Fruit Scheme, whereby each child in Reception receives a free piece of fruit or veg each day.



Milk Scheme

- All pupils aged 4 years old and younger will be entitled to free milk everyday until their 5th birthday. To address any dietary requirements, non - dairy alternative can be brought into school for staff to give to your child.



WOODFORD
PRIMARY SCHOOL

What do the children need to bring to school everyday?



- School book bag - *attach one small keyring to help your child identify their bag.*
- Reading Book and Reading Record Book
- School PE kit
- Waterproof trousers & wellies (leave in school)
- Dark green coat or School coat
- School water bottle – named



Include a familiar icon on your child's name label to help them identify their belongings if needed



Uniform

For branded items our school uniform suppliers are:

- Monkhouse <https://www.monkhouse.com/>
- Express Uniform <https://www.expressuniform.co.uk/>

For our school uniform policy, please refer to our website.

School Uniform
Woodford Primary School Blazer with school logo
Woodford Primary School V-neck jumper or cardigan with school logo
or
Plain Dark Green V-neck jumper or cardigan without school logo
White shirt, with pointed collar, long or short sleeves
Woodford Primary School tie
Grey skirt/pinafore/trousers/shorts
Dark Green gingham summer dress (summer term only)
Black school shoes – no trainers
Grey tights, socks - ankle or knee
Woodford Primary School Coat with school logo
Or
Dark Green Coat without school logo



You can purchase non-branded items from a shop or supermarket of your choice.



WOODFORD
PRIMARY SCHOOL

What should your child practise to prepare them for school?

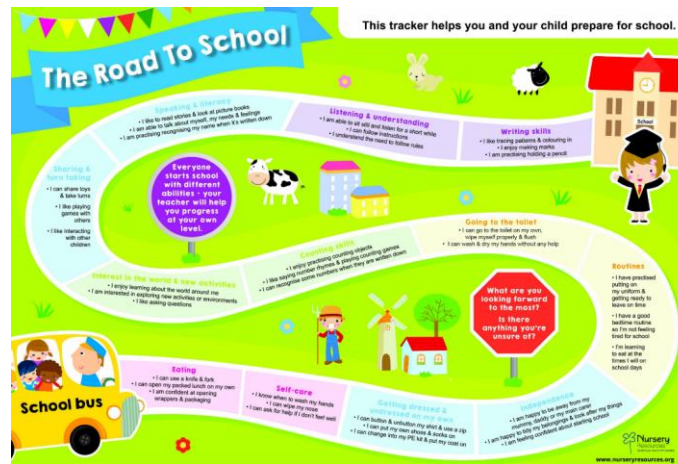
- Getting changed into and out of their school uniform, including buttons and PE kit.
- Fastening their own coat and shoes.
- Independently using the toilet and washing hands.
- Using a knife and fork.
- Independently peeling fruit.
- Opening and closing their book bag.
- Listening to stories.





Road to School

Our 'Starting School' page on our website includes a **Road to School** poster which provides lots more ideas you can try with your child at home to help prepare them for school.





WOODFORD
PRIMARY SCHOOL

'All About Me' Shoebox

To help us get to know your child we'd like to learn all about their favourite things.

Please support your child to gather together a few special items; toys, objects, special photographs, a favourite book and store them in a small box. You can decorate your box too!

Please bring to school on their first full day – Thursday 7th September.





WOODFORD
PRIMARY SCHOOL

School Nurse Service

- Previously, if you had any concerns about your child's health, you would have contacted your Health Visitor.
- Once your child starts in Reception they transition from the Health Visiting team, to the School Nurse Service.
- The School Nurse is here to provide support for the health and wellbeing of your child through their school journey, until the leave in Year 11.



WOODFORD
PRIMARY SCHOOL

Books





WOODFORD

PRIMARY SCHOOL



- Develop relationship between school and parents/community
- Support the school via fundraising
- So far this year...



8 events

£1100+
raised
(pre-Summer fair!)

**Outdoor
provision part-
funded**
(more to come!)

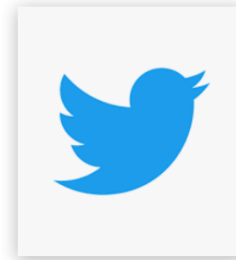
woodfordprimarypta@gmail.com



WOODFORD
PRIMARY SCHOOL

How will we communicate with you

- Weekly Newsletter (emailed)
- Twitter @woodfordpri @WoodfordRec
- www.woodfordprimary.org.uk
- Tapestry – Academic Portfolio



Contacting teachers:

- Quick messages at drop off/pick up times
- Meetings – book via school office, these can be over the phone or in person at a time to suit you

School Office Opening Hours: 8.30 – 3.30

Mrs Parnell-Thickbroom

admin@woodfordprimary.org.uk





WOODFORD
PRIMARY SCHOOL

Settling In

Monday 4th September

8.45 – 11.00am

Tuesday 5th September

8.45 – 12.00pm

Wednesday 6th September

8.45 – 1.00pm (*lunch*)

Thursday 7th September

8.45 – 3.15pm

(before and after-school Kids Club begins)

Friday 8th September

8.45 – 3.15pm





WOODFORD
PRIMARY SCHOOL

Curriculum Meeting



Wednesday 27th September
4.30-5.30pm



We will share more about our approach to teaching at Woodford Primary School including Phonics and Reading. We will share how we work in partnership with parents to support children's learning at home.



WOODFORD
PRIMARY SCHOOL

The next chapter...

Teacher Phone Calls

Monday 17th & Tuesday 18th July

We are really looking forward to welcoming our new Reception class in September!

Reception is such a magical time in your child's development!





WOODFORD

PRIMARY SCHOOL

admin@woodfordprimary.org.uk Woodford Primary School
0161 549 7100 1 Saunders Roe Way
Woodford
Stockport
SK7 1GX

www.woodfordprimary.org.uk