

“Dream Big, Fly High”



# WOODFORD

PRIMARY SCHOOL

Welcome to our Reception Induction Meeting



WOODFORD  
PRIMARY SCHOOL

# The Leadership Team



Mrs. Woolley  
Director of Primary



Mrs. Drake  
Head of School



Mrs. Calthorpe  
Assistant Head of School

## The Laurus Trust Vision

*“For everyone, regardless of background or circumstance, to be inspired, to thrive in all environments, to recognise what it takes to succeed, to set aspirational goals and to work hard to achieve them.”*





# WOODFORD

PRIMARY SCHOOL





**WOODFORD**  
PRIMARY SCHOOL



*Reception Class  
Teacher*

*Mrs Whitehead*



WOODFORD  
PRIMARY SCHOOL

# Safe and Happy Children

The most important thing to us is that children arrive at school happy and remain happy throughout the day.

A safe and happy environment is conducive to successful learning.







WOODFORD  
PRIMARY SCHOOL

# Learning and Development



- An Enabling Environment
- Children's interests are central to planning and provision
- A mixture of adult directed teaching in whole class and small groups and child-initiated learning
- Opportunities for playing and exploring
- Observational assessment to inform next steps (Assessment for Learning)

# There's much more to it than that of course...

- Making friends
- Learning outside the classroom
- Enrichment Curriculum
- Assemblies
- Playtimes

*Be prepared for anything!*







**WOODFORD**  
PRIMARY SCHOOL

# School Rules





We are respectful

We do our best

We make good choices

# House System

House points are awarded for achievements in accordance with our 3 School Rules, both in relation to pupils' work and how they show respect towards others.

 Altius	Altius is Latin for the Olympic quality 'higher'
 Citius	Citius is Latin for the Olympic quality 'faster' or 'swifter'
 Fortius	Fortius is Latin for the Olympic quality 'stronger'
 Magnus	Magnus is Latin for the qualities of 'great', 'mighty' or 'powerful'



WOODFORD  
PRIMARY SCHOOL

# Our School Day



08.45 School Opens - Morning  
Registration

Learning in classroom and  
outdoors including a snack time

12.00 Lunch

1.00 Afternoon Registration

Learning in classroom and  
outdoors

15.15 Home Time





**WOODFORD**  
PRIMARY SCHOOL

# Attendance & Punctuality

Establishing good habits of attendance and punctuality helps to ensure your child makes the best start at school.

## Every Minute Counts

If you arrive late to school everyday your learning begins to suffer. This graph shows how being late to school everyday over a school year adds up to lost learning time.



(Over one academic year)



**WOODFORD**  
PRIMARY SCHOOL

# Kids Club

Monday – Friday: 7.30 – 8.45am

Monday – Friday: 3.15 – 5.30pm

- Creating a Lego masterpiece
- Channelling creative skills
- Running off some energy outside
- Chilling out with a book



# Lunchtime

- Your child will be entitled to a universal free school meal so there will be no charge.
- You need to order your child's lunch via the School Grid App, where you can choose from a choice of meals.
- You may wish to provide a healthy packed lunch. We are allergy aware and do not allow nuts of any form in school.





# Snack Time

- We take part in the School Fruit Scheme, whereby each child in Reception receives a free piece of fruit or veg each day.



# Milk Scheme

- All pupils aged 4 years old and younger will be entitled to free milk everyday until their 5<sup>th</sup> birthday. To address any dietary requirements, non - dairy alternative can be brought into school for staff to give to your child.



**WOODFORD**  
PRIMARY SCHOOL

## What do the children need to bring to school everyday?



- School book bag - *attach one small keyring to help your child identify their bag.*
- Reading Book and Reading Record Book
- School PE kit
- Waterproof trousers & wellies (leave in school)
- Dark green coat or School coat
- School water bottle – named



Include a familiar icon on your child's name label to help them identify their belongings if needed

# Uniform

For branded items our school uniform suppliers are:

- Monkhouse <https://www.monkhouse.com/>
- Express Uniform <https://www.expressuniform.co.uk/>

*For our school uniform policy, please refer to our website.*

School Uniform
Woodford Primary School Blazer with school logo
Woodford Primary School V-neck jumper or cardigan with school logo
or
Plain Dark Green V-neck jumper or cardigan without school logo
White shirt, with pointed collar, long or short sleeves
Woodford Primary School tie
Grey skirt/pinafore/trousers/shorts
Dark Green gingham summer dress (summer term only)
Black school shoes – no trainers
Grey tights, socks - ankle or knee
Woodford Primary School Coat with school logo
Or
Dark Green Coat without school logo



You can purchase non-branded items from a shop or supermarket of your choice.



**WOODFORD**  
PRIMARY SCHOOL

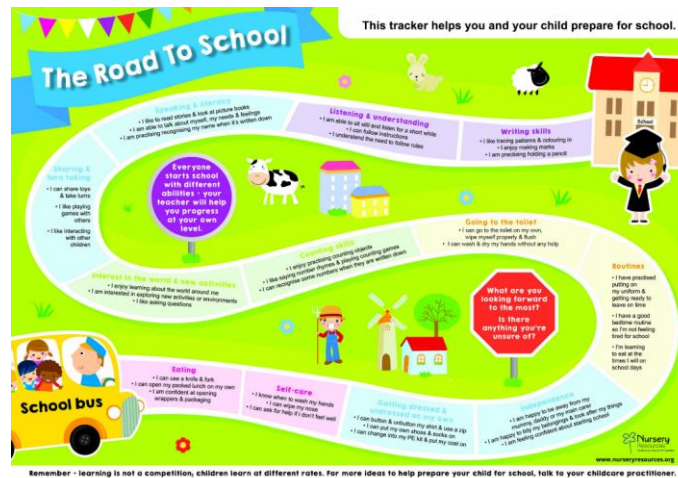
# What should your child practise to prepare them for school?

- Getting changed into and out of their school uniform, including buttons and PE kit.
- Fastening their own coat and shoes.
- Independently using the toilet and washing hands.
- Using a knife and fork.
- Independently peeling fruit.
- Opening and closing their book bag.
- Listening to stories.



# Road to School

Our 'Starting School' page on our website includes a **Road to School** poster which provides lots more ideas you can try with your child at home to help prepare them for school.



# School Nurse Service

- Previously, if you had any concerns about your child's health, you would have contacted your Health Visitor.
- Once your child starts in Reception they transition from the Health Visiting team, to the School Nurse Service.
- The School Nurse is here to provide support for the health and wellbeing of your child through their school journey, until the leave in Year 11.



# ‘All About Me’ Shoebox

To help us get to know your child we'd like to learn all about their favourite things.

Please support your child to gather together a few special items; toys, objects, special photographs, a favourite book and store them in a small box. You can decorate your box too!

Please bring to school on Monday 8<sup>th</sup> September.





WOODFORD  
PRIMARY SCHOOL

# Books





**WOODFORD**  
PRIMARY SCHOOL



- Develop relationship between school and parents/community
- Support the school via fundraising to enhance the children's educational experience.
- Bring the community together.



**14 events**

**£9,600  
raised**  
(July 24 to July 25)

**Forest School  
Outdoor Library  
School Library  
Musical  
Instruments**

[woodfordprimarypta@gmail.com](mailto:woodfordprimarypta@gmail.com)

[www.woodfordprimary.org.uk](http://www.woodfordprimary.org.uk)



# WOODFORD

PRIMARY SCHOOL





**WOODFORD**  
PRIMARY SCHOOL

# Settling In

**Tuesday 2<sup>nd</sup> September**

8.45 – 12.00pm

**Wednesday 3<sup>rd</sup> September**

8.45 – 1.30pm

**Thursday 4<sup>th</sup> & Friday 5<sup>th</sup> September**

8.45 – 3.15pm

(before and after-school Kids Club begins)





WOODFORD  
PRIMARY SCHOOL

# Curriculum Meeting



Wednesday 24<sup>th</sup> September  
4.00 - 5.00pm

We will share more about our approach to teaching at Woodford Primary School including Phonics and Reading. We will share how we work in partnership with parents to support children's learning at home.



# How will we communicate with you

- Weekly Newsletter (emailed)
- [www.woodfordprimary.org.uk](http://www.woodfordprimary.org.uk)
- Tapestry – Academic Portfolio
- MCAS

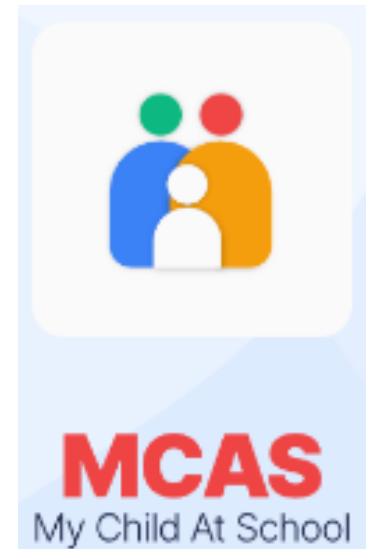


## Contacting teachers:

- Quick messages at drop off/pick up times
- Meetings – book via school office, these can be over the phone or in person at a time to suit you

School Office Opening Hours: 8.30 – 16.00

[admin@woodfordprimary.org.uk](mailto:admin@woodfordprimary.org.uk)





WOODFORD  
PRIMARY SCHOOL

# The next chapter...

We are really looking forward to welcoming our new Reception class in September!

*Reception is such a magical time in your child's development!*





# WOODFORD

PRIMARY SCHOOL

admin@woodfordprimary.org.uk Woodford Primary School  
0161 549 7100 1 Saunders Roe Way  
Woodford  
Stockport  
SK7 1GX

[www.woodfordprimary.org.uk](http://www.woodfordprimary.org.uk)